

NOTES
1. All relevant details, levels and dimensions to be checked on site prior to commencement of work.

(M)	
(L)	
(K)	
(J)	
(I)	
(H)	
(G)	
(F)	
(E)	
(D)	
(C)	
(B)	
(A)	LAYOUT CHANGED 01-08-09
REV	DESCRIPTION DATE

Copyright rests in the
Department of Public Works



HEAD OFFICE
Private Bag 905
Pretoria
0001
Tel (012) 337 2000
Acting Director General:
Dr. S. Phillips

Consultant/Departmental
AFROTEQ
FACILITIES MANAGEMENT (PTY) LTD
CENTURY GATE
Off Beersmansdrift Road & Century Drive
Century City
Maitland
7441
Tel: (021) 551 7225
Fax: (021) 551 7229
E-MAIL: INFO@AFROTEQ.CO.ZA

Discipline
SPACE PLANNING STUDY

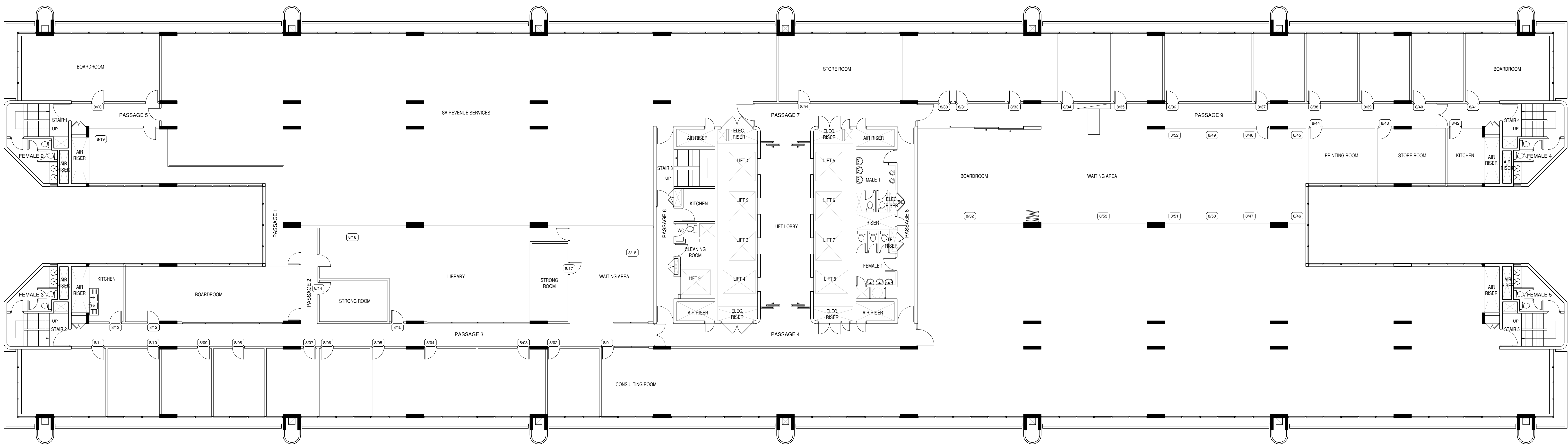
Service

**SPACE UTILIZATION
AUDIT AND REPORT
FOR
CAPE TOWN PARLIAMENT**

Drawing title
**AS BUILT DRAWING
90 PLEIN STREET
8th FLOOR**

Ref. no.	Designed
Scale	1:125 Drawn DPW
Date	AUGUST 2009 Checked DPW
Type number	Revision A
Drawing number	

PLEIN STREET



8TH FLOOR